



**Oakfield Advance Building Solution, Sligo**

Oakfield Business & Technology Park  
Sligo



## Building details

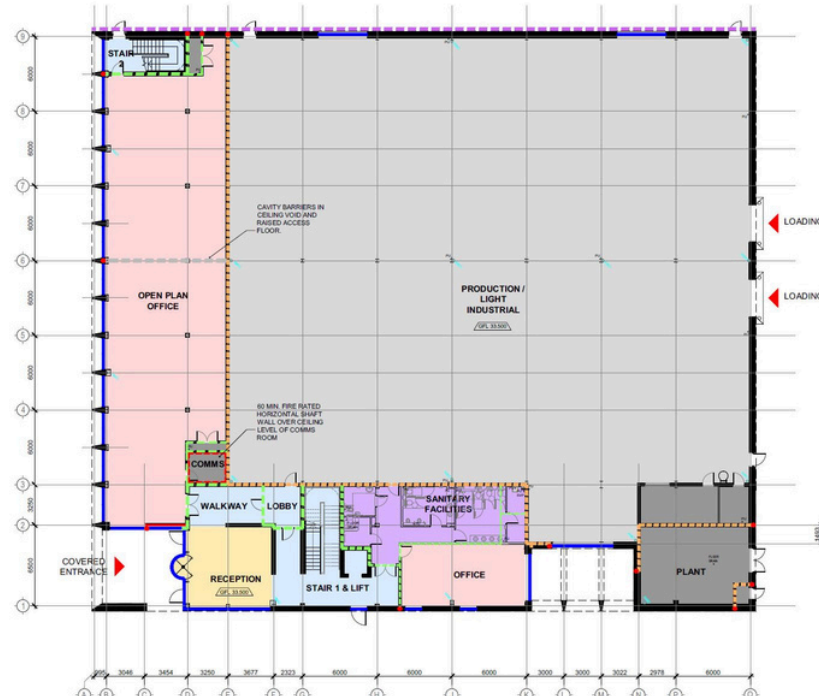
- Advance Building Solution of c. 2,930 m<sup>2</sup> (c. 31,538 ft<sup>2</sup>) with opportunity for expansion subject to planning
- Technology/manufacturing space of c. 1,537 m<sup>2</sup> (c. 16,544 ft<sup>2</sup>) with roller shutter doors to yard
- Ancillary space totalling c. 1,157 m<sup>2</sup> (c. 12,454 ft<sup>2</sup>) including office space over two floors (with raised access floors, suspended ceilings, lighting, air conditioning) showers, toilets and common areas
- Surface car parking for 64 cars with EV charging terminals and cycle parking onsite

## Sustainability

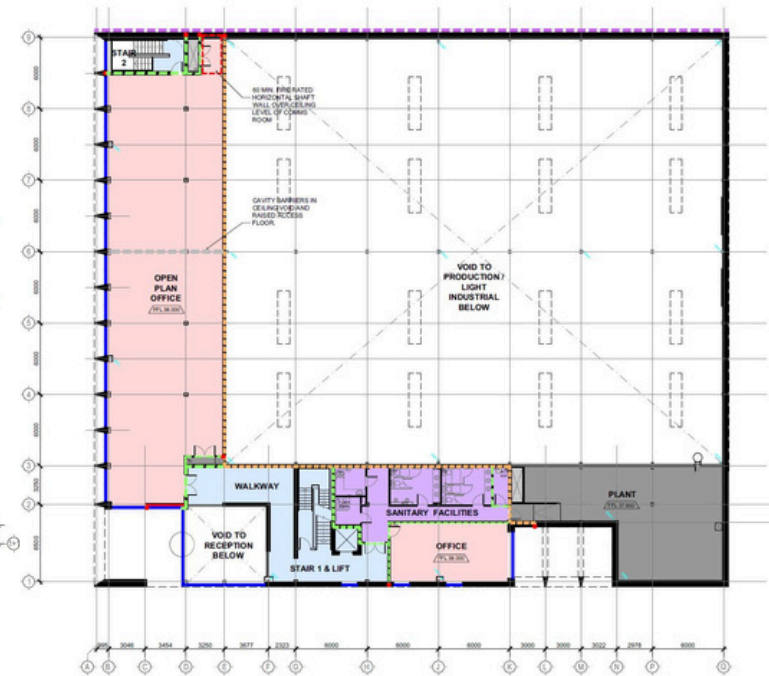
- Designed to achieve LEED CS accreditation and nZEB compliance

# Specification

GROUND FLOOR PLAN



FIRST FLOOR PLAN



### Production Space

- c. 1,537 m<sup>2</sup>
- c. 16,544 ft<sup>2</sup>

### Ground Floor Office

- c. 383 m<sup>2</sup>
- c. 4,122 ft<sup>2</sup>

### First Floor Office

- c. 393 m<sup>2</sup>
- c. 4,230 ft<sup>2</sup>

### Total Floor Area

- c. 2,930 m<sup>2</sup>
- c. 31,538 ft<sup>2</sup>

# Accessibility

Sligo Town - 3 km - 7 mins

Dublin City - 220 km - 2hr 30 min

Belfast City - 2hr 35 min

---

Belfast Airport - 202 km - 2hr 35 min

Dublin Airport - 220 km - 2hr 35 min

Shannon Airport - 206 km - 2 hr 20 min

Ireland West International Airport –  
56km (50m)

---

Excellent rail links to Dublin with 8 daily  
services

---

Sligo Port – 4 km (9m)

Galway Port - 138 km ( 2hrs)

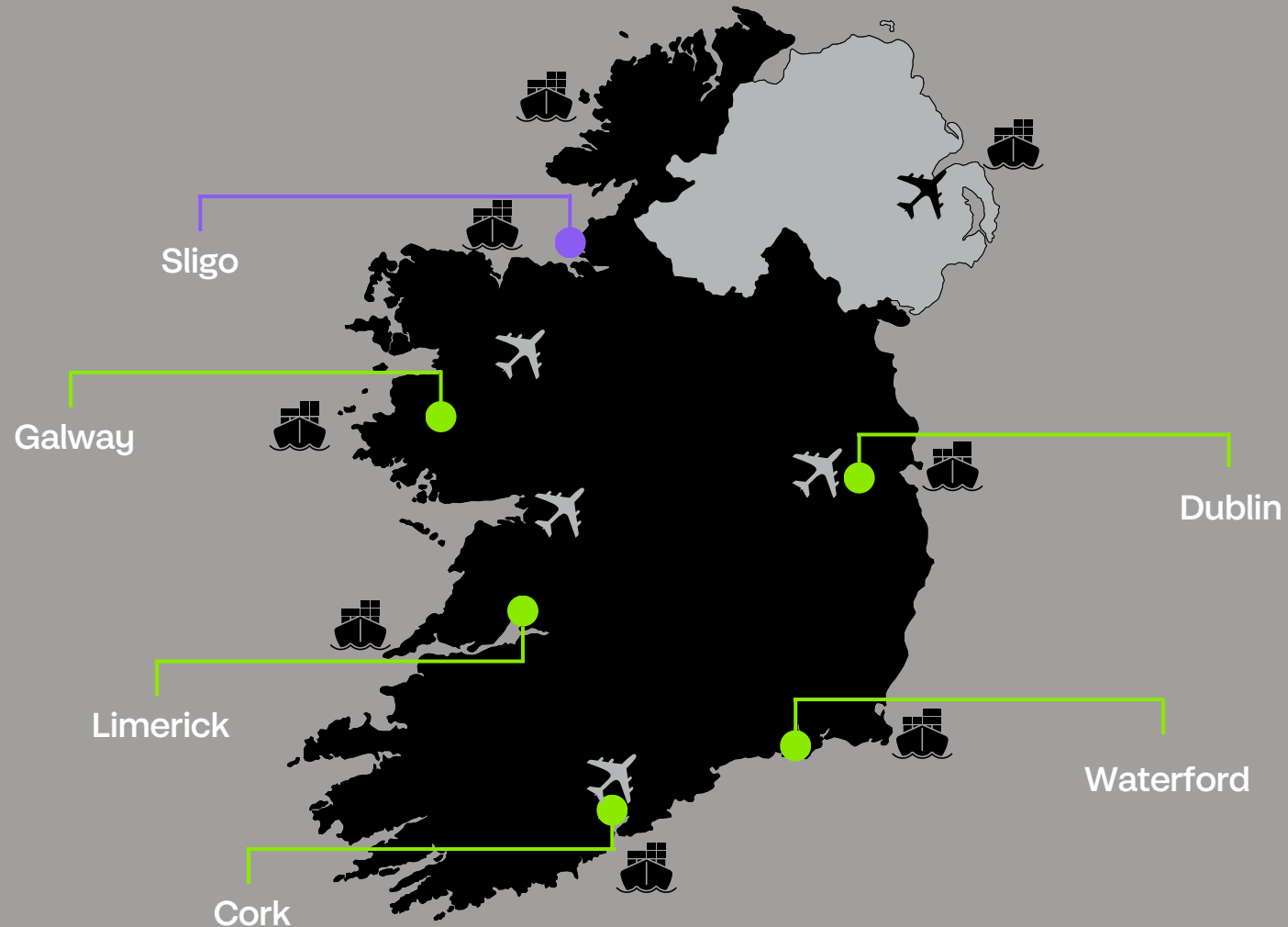
Dublin Port - 220 km (2hrs 30 min)

Killybegs Port – 95km (1hr 16m)

Belfast Port - 202 km (2 hrs 35 min)

---

There are 56 FDI client companies that  
employ c. 8,000 people in the North  
West region. Key business and  
technology clients include; Nolato,  
Phibro, Abtran, Abbott Ireland and AT  
Innovate. Overstock, Tata Consulting  
Services, Abbott, Optum United Heath  
Group, PGIM and SITA.





Exterior



Exterior



Exterior





# IDA Ireland



**Contact our team**

IDA Property Sales & Marketing, Athlone

t +353 90 6471500 | [marketing.property@ida.ie](mailto:marketing.property@ida.ie) | [www.idaireland.com](http://www.idaireland.com)